

Safety and Flight Evaluation Conference - 2005



April 26 thru April 30, 2005

K-State at Salina

College of Technology and Aviation

Salina, Kansas



The Right Way to Go for Flight Simulation



Whatever the training requirement, Frasca has a solution.

With a comprehensive product line that covers virtually any aircraft, features leading technology and delivers unfailing customer service, Frasca is the way to go for flight simulation. Flight schools, airlines and military organizations worldwide rely on Frasca for their simulation needs - you can too! Contact us today to find out how a Frasca device can enhance your training program.

tel: 217.344.9200
fax: 217.344.9207
email: info@frasca.com

 **FRASCA**
INTERNATIONAL, INC.

TruFlite™

www.frasca.com
906 East Airport Road
Urbana, IL 61802-7407, USA

THE OFFICIAL PRIVATE JET OF SERIOUS OVERACHIEVERS.



For some, success seems to come as naturally as breathing. As the company that invented fractional jet ownership, our success comes from being the best at what we do, day after day. So our Owners expect more from us. For instance, the ability to fly whenever and wherever they want. We do it by giving them access to our entire global fleet – over 500 jets under management, including 14 different aircraft types. Not to mention we're owned by Berkshire Hathaway, so they know their investment is secure. Just a few of the reasons we have more Owners than all our competitors combined. So why settle for just a plane? Whether it's unmatched reliability, unparalleled safety or securing their aviation investment, NetJets® Owners all want one thing. The best.

1-877-356-0025 | www.netjets.com

NETJETS®
Leave nothing to chance™



What's Next? We Have Your Needs Covered.

Aspiring Aviators

You Can Fly: Find out what it's all about or inspire others to take to the skies. ASA-YCF \$19.95

Taking the Short Approach: Be the smartest one in your class with this comprehensive orientation to flight training. ASA-SHORT-APP \$39.95



Sport Pilots

Sport Pilot: Choosing the Light Sport Aircraft that's right for you. Freedom To Fly. ASA-F2F-SPORT \$24.95

Sport Pilot Test Prep: Earn your Sport Pilot License. ASA-TP-SPORT-05 \$15.95

FAA Encounter

Virtual Test Prep Private: Ace the FAA Knowledge Exam with the best aviation ground school on DVD. ASA-VTP-P-05 \$99.95

Private Oral Exam Guide and Visualized Flight Maneuvers--High-Wing: Pass your Checkride with flying colors. ASA-OEG-P8 \$12.95 and ASA-VFM-HI-2 \$19.95



Career Pilots

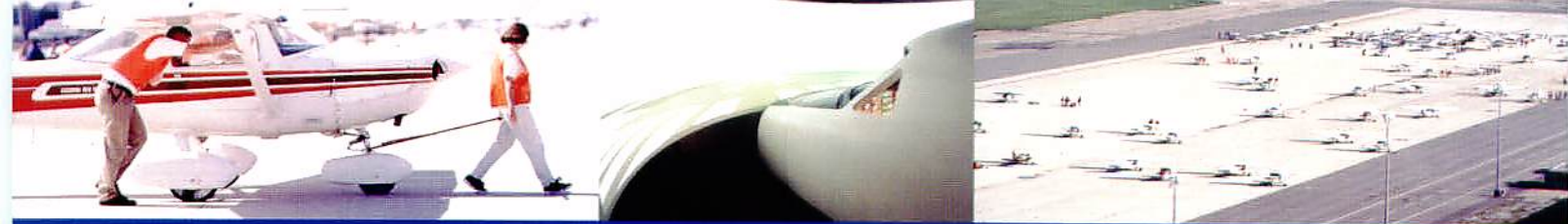
Checklist for Success: Land that airline interview. ASA-CKLIST-5 \$29.95

Airline Pilot Technical Interviews: Be prepared to display your flying skills. ASA-ATP-INT-2 \$29.95



Aviation Supplies & Academics, Inc.
Call 1-800-ASA-2-FLY or visit
www.asa2fly.com to see the full
product line and to find a dealer near you!





SAFECON 2005

You are Cleared to Land at SLN,
Runway 18/36 is All Yours.

Recent facility improvements

Since SAFECON last called Salina home in 1999, the FAA completed construction on the new state-of-the-art ATCT and expanded the operating hours. ATCT is now open 7:00 a.m.-11:00 p.m., 365 days a year!

Runway 18/36 is now open! The Salina Airport Authority finished construction on the new 4,300' parallel runway, which will be for the *exclusive* use of SAFECON participants during the 2005 event!

*We are proud to be
the host for
SAFECON 2005!*

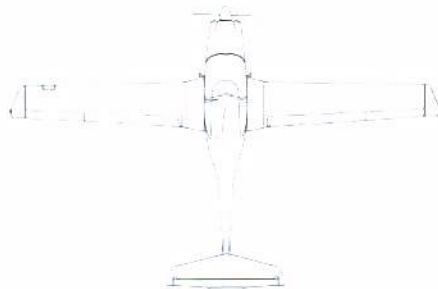
*Good luck to all participants
this year and enjoy
your time at*



DEDICATED... **to flight training**



DA20



DA40



DA42

From Private through Commercial Multi-Engine IFR, only Diamond offers a full range of modern training aircraft.
888-359-3220 www.diamondair.com

Performance • Safety • Value
Integrity

 **Diamond**
AIRCRAFT

CHOOSE THE RIGHT

Approach



Don't hesitate, Blackwell Publishing offers the best aviation manuals to keep you on the right approach...

Over 50 titles to choose from including these great flight manuals plus others. CALL TODAY to request a complete aviation catalog.



ISBN 0-8138-1042-6
\$24.99



ISBN 0-8138-0260-1
\$39.99



ISBN 0-8138-1153-8
\$39.99



ISBN 0-8138-2300-5
\$34.99



ISBN 0-8138-0023-4
\$39.99



Blackwell Publishing Professional
2121 State Avenue
Ames, IA 50014-8300
800.862.6657
www.blackwellprofessional.com

Code: VNIFA5



ISBN 0-8138-0808-1
\$29.99



ISBN 0-8138-0833-2
\$39.99



ISBN 0-8138-0633-X
\$39.99



ISBN 0-8138-2098-7
\$39.99



ISBN 0-8138-1011-6
\$39.99



PHOENIX AVIATION MANAGERS, INC.

PROUD SPONSOR OF THE NIFA SAFECON

A Member of the Old Republic Insurance Group
Specializing in College and
University Flight Program Insurance.

Atlanta, Georgia
770-590-4950

Dallas, Texas
972-991-7223



TABLE OF CONTENTS

NIFA OFFICERS

PRESIDENT

HEATH LARSON

VICE PRESIDENT - CONFERENCE

NANCY MILLERET

VICE PRESIDENT - COMPETITION

EVIE ROSS

SECRETARY

BRIAN YOUNGERS

TREASURER

SCOTT BRYANT

FACULTY ADVISOR

MARLON JOHNSTON

CHIEF JUDGES

NIFA SENIOR CHIEF JUDGE

JODY MCCARRELL

SAFECON CHIEF JUDGE

ERIC BARTON

SAFECON ASSOCIATE CHIEF JUDGE

BRIAN JACKSON

<i>Welcome from the President of Kansas State University, Jon Wefald</i>	7
<i>Welcome from the Dean of the College of Technology and Aviation, Dennis Kuhlman</i>	8
<i>Welcome from NIFA Executive Director, Gary Hemphill</i>	9
<i>Welcome from the NIFA President, Heath Larson</i>	10
NIFA Officers	11
SAFECON 2005 Chief Judges	12
SAFECON History of Winners	13
Awards Banquet Guest Speaker from Cessna Aircraft Company, Jack Pelton, CEO	14
K-State at Salina - Through the Years	15 - 17
SAFECON 2005 Awards	18 - 19
Schedule of Events	22 - 23
Cessna Aircraft Company	24 - 28
SAFECON Competitors	
<i>Bridgewater State College</i>	30
<i>Broward Community College</i>	30
<i>Central Missouri State University</i>	31
<i>Central Texas College</i>	31
<i>Christian Heritage College</i>	32
<i>Delta State University</i>	32
<i>Embry-Riddle Aeronautical University - Daytona</i>	33
<i>K-State at Salina</i>	33
<i>LeTourneau University</i>	34
<i>Liberty University</i>	34
<i>Metropolitan State University at Denver</i>	35
<i>Mercer County</i>	35
<i>Mt. San Antonio College</i>	36
<i>The Ohio State University</i>	36
<i>Ohio University</i>	37
<i>Oklahoma State University</i>	37
<i>Purdue University</i>	38
<i>Southeastern Oklahoma State University</i>	38
<i>Southern Illinois University</i>	39
<i>Spartan College of Aeronautics & Technology</i>	39
<i>St. Cloud State University</i>	40
<i>United States Air Force Academy</i>	40
<i>United States Naval Academy</i>	41
<i>University of Illinois</i>	41
<i>Western Michigan University</i>	42
<i>Westminster College</i>	42
<i>Participating Teams Not Pictured</i>	43
Regional Map	51



Office of the President
 110 Anderson Hall
 Manhattan, KS 66506 -0112
 785-532-6221
 Fax: 785-532-7639

WELCOME FROM THE PRESIDENT OF KANSAS STATE UNIVERSITY

Dear National SAFECON Participants:

On behalf of everyone at Kansas State University, I would like to welcome you to K-State at Salina and the National Intercollegiate Flying Association's Safety and Flight Evaluation Competition.

K-State at Salina is one of the nine colleges that make up the Kansas State University team, a team that is known for its excellence at the national level on every front from academics to athletics. Kansas State University remains the school of choice among Kansas high school graduates and is the leading public university in the production of student scholars.

We are the state's land-grant university, helping to make the quality of life better for Kansans through research and extension services. We celebrate achievement in the arts, as well as our traditional outstanding strengths in engineering and agriculture.

K-State at Salina provides excellent opportunities for students to explore the ever-expanding world of technology and the fascinating careers in aviation. I hope that you will enjoy your time at K-State at Salina.

Best wishes and good luck throughout the conference.



Sincerely

Jon Wefald
 Jon Wefald
 President

dh



WELCOME FROM THE
DEAN OF THE COLLEGE
OF TECHNOLOGY
AND AVIATION



Office of the Dean
College of Technology and Aviation
Kansas State University at Salina
2310 Centennial Road
202 College Center
Salina, KS 67401 -8058
785-826-2601
Fax: 785-826-2998
E-mail: dean@sal.ksu.edu

Dear National SAFECON Participants:

On behalf of the faculty, staff, and students of K-State at Salina, welcome to NIFA's SAFECON 2005.

K-State at Salina is proud to be hosting the "Final Four" of intercollegiate competition of flight skills. Past hosts of SAFECON have established a strong tradition of outstanding conferences, and K-State at Salina is determined to make this year's competition one more in this history of excellence.

K-State at Salina is fortunate to be located next to an airport with 12,300 feet of main runway and to be equipped with modern classrooms, computer labs, flight simulators, briefing rooms, operations dispatch, state-of-the-art maintenance facilities, two 27,000 square foot hangars, and a modern fleet of more than 35 aircraft ranging from Cessna 172s to a Cessna CitationJet, including the newest G1000 cockpit equipped 172s just added this spring.

Congratulations to each of you on your qualification for this year's National SAFECON competition. Enjoy your stay in Salina and best wishes for a safe and successful competition.

Sincerely,

Dennis K. Kuhlman
Dean





WELCOME FROM THE NIFA EXECUTIVE DIRECTOR

Office Of The
Executive Director

April 26, 2005

Dear SAFECON Competitors:

Welcome to SAFECON 2005! NIFA's 57th national Safety And Flight Evaluation CONFERENCE. This is the third time in eight years that Kansas State University—Salina, has served as our hosts. Over the course of the last year, many individuals have spent thousands of hours planning for this one very special week of competition. Their goal is to provide you with an opportunity to demonstrate the knowledge and skills which you have acquired, in your quest to join the ranks of aviation professionals.



While you are here at SAFECON, be sure to take the time to visit with the NIFA corporate sponsors and exhibitors. You will find that they are as excited and committed to NIFA as you are. In fact, you will find that some of the corporate representatives attending SAFECON are also former NIFA competitors. And each is deeply convinced of the value of the NIFA experience.

As we begin this week of competition, I would like to wish each of you the best of luck and to remind you that it is through NIFA's commitment to education that we can achieve the highest degree of safety possible. Through competition, we recognize the achievement of excellence.

Sincerely,

Gary A. Hemphill
NIFA Executive Director



WELCOME FROM THE NIFA PRESIDENT



Dear SAFECON Participants,

Greetings, and welcome to K-State at Salina for SAFECON 2005! On behalf of myself, as well as the rest of the NIFA officers, I extend the most cordial of welcomes to all who have come to be a part of SAFECON 2005.

Congratulations competitors! You truly represent the cream of the crop. I encourage you to take advantage of your time with such an elite group, by branching out and making friends that you will likely see time and again as you "reach for the stars" in your aviation career.



Most assuredly, an event of this magnitude would never truly fly without the many tireless volunteers that pour their hearts into making this a first-class event. Be sure to thank your SAFECON 2005 judges, sponsors, and student volunteers this week, because they are the glue that holds it all together. Should any questions or problems arise during the week, I strongly encourage you to bring it to the attention of any member of the SAFECON team. We will be glad to assist you.

Enjoy your time in Salina, and fly safely!

Sincerely,

Heath L. Larson
NIFA President



NIFA OFFICERS

HEATH LARSON, PRESIDENT

Heath Larson is a senior from Marquette, KS majoring in Airway Science-Professional Pilot, and holds flight instructor and multi-engine commercial pilot certificates, with instrument ratings, and works as a CFII for K-State at Salina. Heath spent last summer as a flight operations intern for American Airlines in Dallas/Fort Worth and has set the career goal of flying for a major airline. Heath is an active member of Phi Delta Theta fraternity, as well as Women in Aviation.



NANCY MILLERET, VICE PRESIDENT OF CONFERENCE

Nancy Milleret is a junior from Tonganoxie, KS majoring in Airway Science with a minor in Business. She is an Ambassador for K-State's College of Technology and Aviation and works as a flight instructor for K-State at Salina and holds a commercial pilot certificate, CFI, CFII, and multi-engine rating. After graduation Nancy plans to pursue a career as a corporate pilot. Nancy also participates in Women in Aviation and the GlobalFlyer mission.



EVIE ROSS, VICE PRESIDENT OF COMPETITION

Evie Ross is a junior from Winfield, Kansas, majoring in Airway Science with a minor in Business. She has actively been involved in Women in Aviation and is employed by K-State at Salina as a flight instructor. She currently holds a commercial pilot certificate with a multi-engine rating, CFI, and CFII. After graduation, Evie will continue to pursue a flying career on the east coast.



BRIAN YOUNGERS, SECRETARY

Brian Youngers is originally from Wichita, Kansas, and is a senior in Airway Science. He will graduate in May and will be pursuing a career in Aerospace Education. Brian currently has his CFI, commercial, and instrument certificates. He is involved in many campus organizations, including being the Vice President of the Entrepreneurial/SIFE Organization and this is his first experience with NIFA.



SCOTT BRYANT, TREASURER

Scott Bryant started his KSU undergraduate career in Manhattan, enrolled in the professional pilot program in 2002, and will graduate this spring with his bachelor's degree in airway science, and a minor in business. He has been involved on campus as a peer tutor, and currently works as a flight instructor for K-State at Salina, where he plans to continue instructing after graduation.



MARLON JOHNSTON, FACULTY ADVISOR

Marlon Johnston joined K-State at Salina as the Head of the Aviation Department during the fall 2000 semester after a military career with the United States Air Force. Johnston provides administrative oversight and academic leadership for the aviation maintenance and professional pilot degree programs. Johnston is a master navigator with over 3,000 total hours and was an instructor and evaluator as a navigator and radar navigator (bombardier) as well as a Combat Crew Training School instructor.





SAFECON SENIOR JUDGES

JODY MCCARRELL, NIFA SENIOR CHIEF JUDGE

Jody McCarrell resides on her ranch located in DeQueen, Arkansas with her husband of 50 years, Wayne McCarrell. Jody has been active in the Ninety Nine organization and NIFA since 1970. She has been active as a Chief Judge on the Regional as well as National level. Jody holds a Commercial License with Certified Flight Instructor Rating, both Single and Multi engine, along with Instrument and Instrument Instructor Ratings. Jody did corporate flying for twelve years operating turbo prop aircraft. Jody was one of first-four women to serve as a Proficiency Flight Competition Judge appointed by the Federation Aeronautique rising to the rank of Jury. Jody help set up and run the navigation event when the USA hosted for the first time the 6th World Precision Flying Championship in the State of Florida in 1985. Jody later served as the Competition Director of the 12th World Precision Flying Championship held in Fort Worth, Texas in 1996. Jody is immediate Past President of the Ninety Nines and is still serving on the Board of Directors. She also sits on the Board of Directors for the NAA, in Washington, DC.



ERIC BARTON, SAFECON CHIEF JUDGE

Eric Barton learned to fly in Denver, CO while enrolled as a student at Metropolitan State College of Denver where he competed in his first NIFA competition at the 1993 Nationals at Central Texas College. After graduating, he moved from Denver to Memphis, TN to accept a position in the crew scheduling office of FedEx Express. In 1998, after realizing that he had missed being able to participate in NIFA, he volunteered to help judge during other SAFECON events, and has since gotten hooked. Eric has worked various judging positions at both National and Regional events, and has been the Chief Judge for Region 6 since 2001. When he is not working at FedEx or judging NIFA events, he is still an active general aviation pilot, holding a commercial license (single and multi-engine) with an instrument rating.



BRIAN JACKSON, SAFECON ASSOCIATE CHIEF JUDGE

Brian Jackson is originally from Sioux Falls, SD and was a manager for Target Stores before deciding to get into aviation. He attended the University of North Dakota from 1995 to 1999 and competed on the flying team in regional and national competitions and was on the 1996 National Championship team. When his competition days were over, he became the assistant coach on the UND team in 1999. After graduation he got a job with Weather Modification Inc. flying Piper Seneca's and Cessna 340's flying cloud seeding missions. That was a great job with lots of stories. He decided to get into the judging side of SAFECON to give back to the students and has been judging regional and national competitions ever since. He was hired by Horizon Airlines in February of 2000, whom he is still currently employed with serving as a First Officer on the Dash 8-200, also known as a Q200. He hopes that he will get upgraded to captain later this year.





SAFECON WINNERS

Year	Host School	Loening Trophy	National Champions
1949	Texas Christian University	-	-
1950	Stephens College	-	-
1951	University of Oklahoma	-	-
1952	Oklahoma State University	McAlester College	-
1953	University of Minnesota	Texas Christian University	-
1954	University of Illinois	University of Illinois	-
1955	Texas Christian College	Oklahoma A&M	-
1956	University of Oklahoma	Oklahoma A&M	-
1957	Oklahoma State University	Oklahoma A&M	-
1958	McAlester College	Oklahoma State University	-
1959	University of Illinois	Oklahoma State University	-
1960	The Ohio State University	Oklahoma State University	-
1961	Texas A&M	St. Cloud State University	-
1962	Oklahoma State University	Oklahoma State University	-
1963	Southern Illinois University	Ohio University	-
1964	Montana State University	Oklahoma State University	-
1965	Purdue University	Oklahoma State University	-
1966	University of Colorado	Ohio University	-
1967	Southern Illinois University	Oklahoma State University	-
1968	Ohio University	Parks College of St. Louis	-
1969	Parks College of St. Louis	San Jose State University	-
1970	Montana State University	San Jose State University	-
1971	San Jose State University	San Jose State University	-
1972	Purdue University	Oklahoma State University	-
1973	Southern Illinois University	Broward Community College	-
1974	St. Cloud State University	Southern Illinois University	-
1975	University of Albuquerque	Oklahoma State University	-
1976	Embry-Riddle Aero. Univ. - Daytona	Oklahoma State University	-
1977	Oklahoma State University	Southern Illinois University	-
1978	Middle Tennessee State University	Southern Illinois University	-
1979	Northeast Louisiana University	Oklahoma State University	-
1980	University of North Dakota	Oklahoma State University	-
1981	Northeast Louisiana University	University of Illinois	-
1982	Palomar Community College	Oklahoma State University	Southern Illinois University
1983	Western Michigan University	Western Michigan University	Western Michigan University
1984	U.S. Air Force Academy	Oklahoma State University	Southern Illinois University
1985	The Ohio State University	Oklahoma State University	University of North Dakota
1986	Texas State Technical College	Oklahoma State University	University of North Dakota
1987	Southern Illinois University	Mt. San Antonio College	University of North Dakota
1988	Northeast Louisiana University	The Ohio State University	University of North Dakota
1989	University of North Dakota	Embry-Riddle Aero. Univ. - Prescott	University of North Dakota
1990	University of Illinois	Oklahoma State University	University of North Dakota
1991	Nicholls State University	Embry-Riddle Aero. Univ. - Prescott	University of North Dakota
1992	Northeast Louisiana University	Oklahoma State University	Embry-Riddle Aero. Univ.- Daytona
1993	Central Texas College	Oklahoma State University	Embry-Riddle Aero. Univ.- Prescott
1994	Parks College of St. Louis	Parks College of St. Louis	University of North Dakota
1995	Delta State University	Central Texas College	University of North Dakota
1996	Embry-Riddle Aero. Univ. - Daytona	Central Texas College	University of North Dakota
1997	Western Michigan University	Ohio University	Embry-Riddle Aero. Univ.- Prescott
1998	Kansas State University - Salina	Central Texas College	Western Michigan University
1999	Kansas State University - Salina	Minnesota State University - Mankato	Embry-Riddle Aero. Univ.- Prescott
2000	Delta State University	Ohio University	University of North Dakota
2001	University of North Dakota	Minnesota State University - Mankato	University of North Dakota
2002	The Ohio State University	United States Air Force Academy	Western Michigan University
2003	University of North Dakota	Purdue University	Embry-Riddle Aero. Univ.- Prescott
2004	Middle Tennessee State University	United States Naval Academy	University of North Dakota
2005	Kansas State University - Salina	TBA	TBA



AWARDS BANQUET GUEST SPEAKER JACK PELTON

Jack J. Pelton **Chairman, President and Chief Executive Officer** **Cessna Aircraft Company**



Jack J. Pelton is Chairman, President and Chief Executive Officer of Cessna Aircraft Company, the world's leading manufacturer of general aviation aircraft. Pelton joined Cessna in November 2000 as Senior Vice President of Product Engineering, and was named President and CEO in December 2003. He assumed the Chairman title in January 2005.

Pelton, a native of California, has over three decades of aviation experience. Prior to joining Cessna, Pelton served as Senior Vice President of Engineering and Programs at Fairchild Dornier in Germany. He also held positions of increasing responsibility during his 20 years at Boeing, formerly Douglas Aircraft.

Since joining Cessna, Pelton has led multiple product line expansions. The most recent programs include the Citation CJ1+, Citation CJ2+, Citation CJ3, Citation XLS, Citation Sovereign, and Garmin G1000 equipped 172, 182 and 206. These new and upgraded products have helped stimulate the aviation industry, and have exponentially expanded Cessna's backlog.

He serves on the Board of Directors for the General Aviation Manufacturers Association, Board of Directors for Wichita's Habitat for Humanity, Wichita State University's School of Engineering Advisory Council, and the Advisory Council for the Black Courage Fund in Washington, D.C.

An avid supporter of general aviation, Pelton is Citation rated with an instrument, commercial and multi-engine license. He is a single engine aircraft owner and enjoys restoring legacy aircraft.

Pelton and his wife, Rose, reside in Wichita, Kansas. They have two grown children.



ABOVE: FOUNDER HANK NEELY
BELOW: FORMER PRESIDENT TOM CREECH

BELOW: DENNIS KUHLMAN,
CURRENT K-STATE AT SALINA DEAN



K-STATE AT SALINA THROUGH THE YEARS



It was just an idea in the early 1960s.

So begins the story of K-State at Salina. The story, told by former college president and professor Tom Creech '57, '61, is one that brings together an idea for a technology college, a passion for higher education and a dream of making the world a little better through education and innovation.

Today, the College of Technology and Aviation is the ninth col-

lege in the K-State system with about 1,000 students studying in majors such as computer systems technology, professional pilot, aviation maintenance, technology management and mechanical engineering technology, among others. But in the early 1960s, the college was, as Creech has since said, "just an idea."

During this time, Creech and colleague Henry "Hank" Neely '56, '63 were engineering professors at K-State in Manhattan. As part of his job, Neely was given the task of identifying the need for engineering technology and aviation technology training in Kansas and preparing a plan to fulfill it.

"Hank approached his task in true engineering form," Creech said. "He evaluated the need, considered various options and

recruited help to put together a plan to resolve the problem. In late 1964, with the announcement that the Schilling Air Force Base would be closed, he recognized a possible resource to help turn his plan into reality."

It was July 1, 1965, when the Kansas Legislature passed a bill that created the college, which was to be called Schilling Institute. Hank was asked to serve as the first president of the new college, which, instead of being created under K-State as the planners had first envisioned, was recognized as a separate state agency. Classes began in the fall of 1966, and the first 10 graduates finished in the spring of 1968.

Over the course of the next 25 years, the college would change names twice — from Schilling Institute to Kansas Technical Institute to Kansas College of Technology — with a new governing authority each time. Throughout all these changes leading up to the 1991 merger with K-State, Creech saw the institution evolve from its earliest days until his retirement in 1996. Through the span of his

career, he served as president, administrator and professor. Although Neely left the college in 1971, he continues to stay in touch and support the college's ongoing development.

Reflecting on all the changes in the college's relatively short history, Creech said that each change has brought the college "closer to the original vision" of the founders.

"Today, K-State at Salina can look back on a colorful history of evolution from a struggling college which used several obsolete air force buildings, to its present state as a modern, well-defined college campus with new, attractive and functional buildings. Each step of the evolutionary process served the college well, and those visionaries who were so instrumental in implementing the original plan in the late '60s also were able to serve a very useful role in preserving the philosophy and shaping the development of the college to its present status."



K-STATE AT SALINA TODAY AND TOMORROW

Since the merger with K-State in 1991, the Salina campus has become the ninth college in the university's system, officially the College of Technology and Aviation. K-State at Salina has more than doubled enrollment to approximately 1,000 students and has greatly increased the number of full-time students.

With a varied history of institutional names, one thing has remained consistent since the beginning — providing the best hands-on education in an academically rigorous environment. The college offers degrees in aviation, engineering technology, technology management and applied business. Students may take all of their required courses in Salina, and there are many distance learning opportunities.

Although the mission has stayed the same, many of the most traditional "college experience" aspects of the College of Technology and Aviation have gradually become a reality since the 1991 merger.

- The vast majority of the student body is considered "traditional" — unmarried and falling between the ages of 18 and 24.

- Enrollment has increased more than 80 percent in headcount and the number of credit hours taken — current enrollment is approximately 1,000 students.

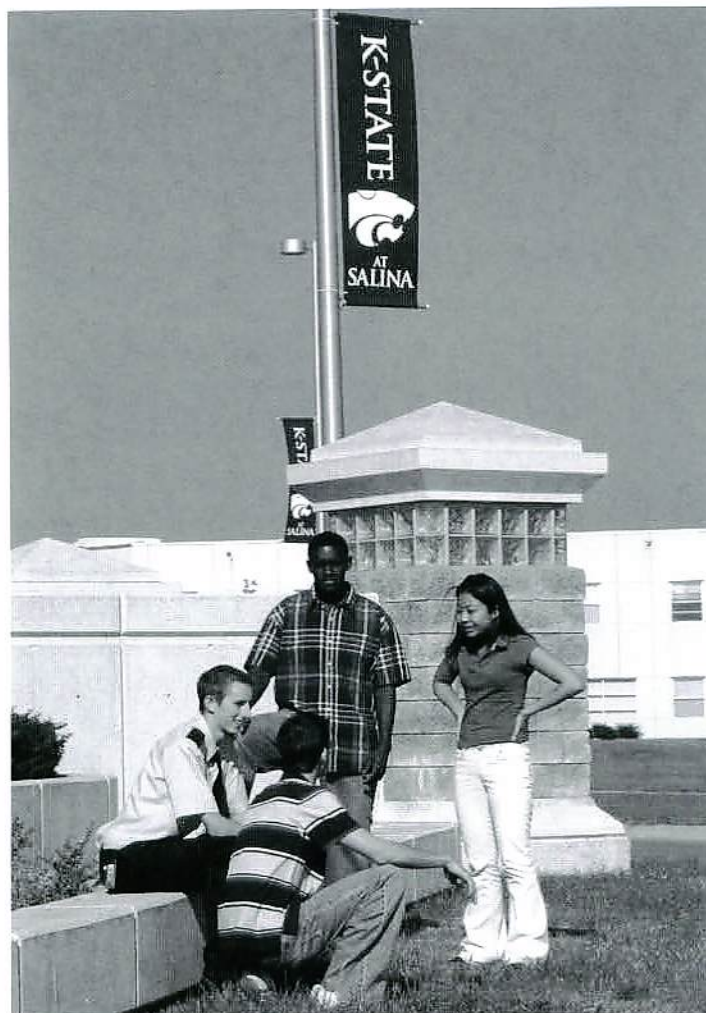
- Students enroll from across the state, nation and world.

- Two suite-style residence halls and a full-service cafeteria accommodate close to 200 residents.

- National clubs and organizations — including an independent student governing association and a chapter of the Phi Delta Theta national social fraternity — provide leadership and involvement opportunities for the college's best and brightest. Several other clubs combine academic and extracurricular interests for national and international contests, such as the mini Baja race and the SAFECON pilot competition.

Faculty, family and Wildcat football

Repeatedly, students comment that the reason they love K-State at Salina is the small campus atmosphere. But a small campus hardly means small-time pro-



STUDENTS GATHER NEAR THE MAIN ENTRANCE GATE.

fessors. In fact, many K-State at Salina faculty members are well-known and well-recognized in their fields. Dennis Kuhlman, dean of the college, is proud to boast about any number of faculty accomplishments.

"Our faculty members take their professional knowledge — both in the classroom and in the field — very seriously," he said. "They present at national conferences, do research to support major corporations and are consistently recognized on university, regional and national levels for the work they do."

"Take, for example, the professional pilot program," he said.

"By meeting the rigorous standards of the Master Certificated Flight Instructor program, four of our flight faculty members have achieved this top professional recognition. There is only one other public institution granting aviation degrees in this country that has more MCFIs."

Faculty consulting and field research is no exception on the Salina campus. For example, a professor in the electronic and computer engineering technology program has spent his past seven summers working in research and design for AeroAntenna Inc., a defense department contractor and company known



PROFESSIONAL PILOT STUDENTS INSPECT ONE OF THE PLANES FROM THE UNIVERSITY'S TRAINING FLEET.



worldwide for its specialized GPS antenna designs used in aircraft and smart bombs.

Kuhlman added that the aviation department is the only bachelor's degree program in Kansas for professional pilot or aviation maintenance. He also noted that the engineering technology program is equally unique in the state and region.

"Our engineering technology department provides a more comprehensive range of academic program options than any institution in this region," he said. Options include the traditional electronic, mechanical and construction engineering technology areas of study, as well

as options in computer systems technology and Web development technology.

Because of the small college size and remote campus location, the campus feels very much like a large family, said Jason Braun, junior in technology management from Hays.

"The professors and staff here know the students, not just by our faces, but also our names and even where we're from, what our majors are or who our roommates are," Braun said. "The students all know each other, and it makes it a family type of atmosphere.

"K-State at Salina is the chance to earn a big-name degree while still having that small college experience," he said. "It's really the best of both worlds."

Many students also take advantage of student tickets for athletics events, including football. Several groups caravan to Manhattan each week for tailgating and Wildcat football, and a group of dozens of students and staff members gather for each home game at KSU Stadium for fun and food. In fact, the large grilling unit the group uses was designed and built by a mechanical engineering technology student.



A STUDENT INSPECTS ONE OF THE COMPONENTS OF AN ELECTRONICS PROJECT.



THE STUDENT LIFE CENTER WILL BE BUILT ON CAMPUS TO BECOME A CENTRAL MEETING PLACE FOR STUDENTS. FEATURES WILL INCLUDE A RECREATION CENTER, FOOD COURT AND HEALTH CARE FACILITIES.

"The tailgate party is one of those things that gives our students a connection with the K-State experience in Manhattan," said Delton Gordon, residence life coordinator and one of the regular chefs at the tailgate parties. "It's a way for all of us to enjoy some of the fun of being at a Big 12 school."

academic and mental needs of students. Plans are being made and funds raised for a student life center, with features to include:

- A 300-seat auditorium with a stage
- Recreation and intramural facilities for a variety of sports, including basketball, volleyball, weights and cardiovascular exercise
- A food court and cafeteria
- Student government offices
- Billiards and computer gaming
- Meeting spaces and amenities
- Student services offices
- Physical and mental health care facilities

Onward and upward

As the student population on campus grows, so do the needs and opportunities for student activities, programs and facilities. Since the 1991 merger with K-State, the campus has added two suite-style residence halls, an administrative building, cafeteria and bookstore, and most recently, a multi-use sports complex, Thaumert Recreational Field.

"Thaumert Field is a great addition to the campus," said Kuhlman. "It gives our college a role in the local community and, most importantly, it gives our students a modern facility for intramurals and other campus activities."

One need that continually arises on campus that has not yet been met is that of a central meeting place for students — a student union of sorts — that would meet the physical, social,

"We are committed to creating and supporting an atmosphere that not only allows for success, but also encourages excellence," Kuhlman said. "It's clear that, in order for our college to move to the next level, a student life center is a tremendous priority. This center will make it possible for us to continue to recruit and retain the very best students in engineering technology, aviation and technology management."



DELTON GORDON (LEFT) PREPARES FOOD AT THE WEEKLY TAILGATE PARTY.



SAFECON 2005 AWARDS

National Championship Trophy

The Cessna Aircraft Company

This award is presented to the team that accumulates the most points during the National Competition.

Top Two-Year School

Sporty's Pilot Shop

This award is presented to the top two-year school that accumulates the most points during the National Competition.

Loening Trophy

Delta Air Lines

First awarded in 1929, the Loening Trophy is presented to the team who has displayed outstanding competition performance, air safety, and active participation in aviation in their local community during the last year. All member schools in good standing are eligible.

Flying Events Champions

National Business Aviation Assoc.

The team earning the greatest number of points in the flying events will be presented this award.

Ground Events Champions

Pilots of United Airlines

The team earning the greatest number of points in the ground events will be presented this award.

Judges Trophy

The New Piper Aircraft, Inc.

This trophy is awarded based upon the overall participation of the contestants on a team. Point values are assigned to each non-disqualified contestant placing in each event. The team having the highest number of cumulative contestant points will be the recipient of the trophy.

American Airlines Safety Award

American Airlines

A panel of judges will interview each team's safety officer to review their team's procedures and methods of promoting aviation safety. The team that has demonstrated the safest practices during SAFECON and the past year is presented with this award.

Top Scoring Male Contestant Award

Vector Training Systems

This award will be presented to the male contestant who accumulates the highest number of points in all the competitive events that count towards the National Championship Trophy.

Top Scoring Female Contestant Award

The Ninety-Nines, Inc.

This award is given in memory of Arlene Davis. It will be presented to the female contestant who accumulates the highest number of points in all the competitive events that count towards the National Championship Trophy.

Outstanding Team Member Award

American Eagle Airlines, Inc.

Each team has the opportunity to recognize the contributions and efforts of a team member by selecting him or her as their Outstanding Team Member.

Navigation Event

Jeppesen

The Navigation Event consists of a cross-country flight over a three-to-five leg course between 70 and 120 nautical miles. Each contestant submits a flight plan before takeoff, which includes estimated time en route for each leg, total elapsed time and fuel consumption. The contestant with the lowest penalty points wins.

Short Field Landing Event

Diamond Aircraft Industries

The objective of the Short Field Event is to test the pilot's skills at maneuvering and manipulating the aircraft. After taking off and flying a normal traffic pattern, the objective is to land on the target line. Once the pilot reduces the power, he or she cannot increase it again. The distance in feet from where the aircraft's wheels initially touch the runway from the target line is the pilot's score. The lowest cumulative score from the two landings plus technique penalty points wins.

Power Off Landing Event

Pinnacle Airlines, Inc.

Similar to the Short Field Event, only the power must be reduced and remain at idle on the downwind leg abeam of the target line. The approach is made by gliding for the remainder of the traffic pattern to touchdown on the target line.

Message Drop Event

Phoenix Aviation Managers, Inc.

The objective of the Message Drop Event is to hit a target on the ground with a message container dropped from an aircraft at 200 feet. A team effort by both the pilot and the dropmaster is necessary to maneuver the airplane so the container will hit the target. The contestant with the lowest total distance from the two targets is the winner.

Aircraft Recognition Event

DTC DUAT Service

Slides of an aircraft are shown on a screen for three seconds. Competitors then have fifteen seconds to identify the aircraft's manufacturer, model number and common name, if any.



Simulated Comprehensive Aircraft Navigation Event (SCAN)

Cirrus Design

The SCAN event is a written exam with problems that reference a simulated cross-country flight over a given route. Included in the flight planning are questions on weight and balance, aircraft performance, FARs, aeronautical charts, weather interpretation, and fuel consumption.

Ground Trainer Event

Frasca International, Inc.

This event is designed to test the competency and skill of the contestant's ability to fly under instrument flight rules (IFR) in a flight training device. Flying a predetermined pattern, the competitor must show proficiency in maintaining altitude, heading, and airspeed.

Computer Accuracy Event

Aviation Supplies & Academics, Inc.

Contestants work against the clock to solve mathematical flight planning computations (E6-B). The exam includes problems on time, speed, distance, wind corrections, fuel requirements, and conversion factors.

Hemphill-Weesner Preflight Inspection Event

Hemphill, Weesner and Viner Families

An aircraft is "bugged" with at least 30 unairworthy discrepancies. Contestants are given fifteen minutes to preflight the aircraft and find as many of the discrepancies as possible.

Certified Flight Instructor Event

LimpWindsock.com

Certified Flight Instructors take part in a teaching competition. The event starts with a CFI preparing a lesson on a predetermined subject and teaching it. If weather and time permits, the CFI then teaches the lesson in flight.

IFR Simulator Event

Frasca International, Inc.

Competitors are required to demonstrate instrument flight rules (IFR) proficiency and precision by flying a given route in a flight training device. All aspects of a cross-country IFR flight are included such as clearances, holding patterns, instrument approach procedures, and the diversion to an alternate.

Crew Resource Management/Line Oriented Flight Training Event (CRM/LOFT)

Aerosim-Mechtronix

Two person crews - a pilot flying and a pilot not flying - are assigned a cross-country flight in a simulator. Contestants are judged on their ability to work together in a cockpit environment, as well as their ability to handle in-flight situations.

Collegiate Aviation Progress Award

NetJets, Inc.

This award recognizes the team that has made the greatest improvements in the last year. A judging committee evaluates each team, taking into account the team's performance, safety, membership, aircraft operations, and extracurricular activities.

Coach of the Year

Talon Systems

This award is presented to the coach that has demonstrated the best qualities in coaching, support, and leadership. Team members nominate the coach they feel best meets these criteria.

Women's Achievement Award

The Ninety-Nines, Inc.

Female competitors are interviewed by a board that examines their academic accomplishments, community service, and aviation involvement.

Kershner's Men's Achievement Award

NIFA Foundation

Male competitors are interviewed by a board that examines their academic accomplishments, community service, and aviation involvement.

Harold S. Wood Award for Excellence

General Aviation Manufacturers Assoc.

An award is presented to the student who has demonstrated outstanding performance in academics and services to his or her aviation program, institution, and community.

Red Baron Team Sportsmanship Award

Southwest Airlines

This award is presented to the team displaying the best sportsmanship throughout the week of competition. Each team votes for whom they feel best qualifies for the honor.

Wally Funk Competition Safety Award

Jet Aviation

This award is presented to the team displaying the highest degree of safety during the week of competition. Teams are judged on their ability to maintain a safe environment while handling aircraft, as well as their professionalism and behavior.

National & Regional Top Pilot Awards

Air Line Pilots Assoc.

The contestant that is chosen as the National Top Pilot at SAFECON, along with the Regional Top Pilots from each region, are recognized and presented with these awards.



NIFA FOUNDATION

The NIFA Foundation welcomes you to the 2005 SAFECON and hopes that all of you have a wonderful and safe experience you can remember fondly for many years to come!

Ronald D. Kelly, President
Douglas Carr, Secretary
Douglas Carr, Director Corporate Relations
Kent Backart, Executive Director Emeritus
Robert Clement, Executive Director
David Wood, Trustee
Forrest D. Reece, Jr., Trustee



NIFA/AHP ALUMNI ASSOCIATION



The Association wishes
All competitors a
Wonderful SAFECON!

Robert Clement, President
Peter Bro, Vice President
Robert Fischer, Secretary
Deidre (DJ) Mrugula, Treasurer
Kent Backart, Executive Director

For more information about the Alumni Association, stop by our booth or Write to us at the address below

NATIONAL HEADQUARTERS ARE MAINTAINED AT
1615 Gamble Lane, Escondido, CA 92029

Alpha Eta Rho

INTERNATIONAL AVIATION FRATERNITY



A collegiate fraternity, founded April 10, 1929, at the University of Southern California, to bring together those students having a common interest in the field of aviation

NATIONAL OFFICERS

Ronald D. Kelly, *President*
Arthur Miehle, *Vice President*
Forrest D. Reece, *Director, Corporate Relations*
Bob Clement, *Executive Director*
Kent E. Backart, *Executive Director Emeritus*

REGIONAL GOVERNORS

Joan B. Jones, North New England Governor
Peter Bro, Western Governor
Dr. Larry Carstensen, West Central Governor
Dr. Jerry Chubb, East Central Governor
Jerry Hill, South Central Governor
Mr. Joseph Hoffman, Southeastern Governor

NATIONAL HEADQUARTERS ARE MAINTAINED AT 1863 DOGWOOD HOLLOW DR., GERMANTOWN, TN 38139

A New Line of Complete TAA Training Solutions for Avidyne and Garmin 1000: Glass Cockpits made Clear as 1-2-3.

Level 1: Desktop S/W Module

Ideal for classroom training and web-based distance learning.

A stand-alone desktop environment offering full avionics, automation and systems training for TAA.

Level 2: Basic PC Aviation Training Device

Ideal for TAA primary level flight training, introduction and familiarization courses.

An integrated platform incorporating aircraft cockpit hardware & flight controls representative of a TAA.

Level 3: Advanced PCATD

Ideal for VFR and IFR navigation & procedures with automation training in a realistic TAA cockpit shell.

A TAA advanced integrated avionics platform within an enclosed aircraft cockpit shell resulting in a FAA and JAA qualifiable FTD or FNPT for IR.



Europe, The Middle East & Africa: 25 rue des Salines, 22370 Pléneuf-Val-André, France Tel: 33 (0) 2 9663 0860 Fax: 33 (0) 2 9663 0710 Email: ascent@mechtronix.ca www.mechtronix.ca
The Americas & Asia: 12281 Nicollet Avenue, Burnsville, MN 55337 USA Tel: (952) 894-4694 Fax: (952) 894-4977 E-mail: info@aerosim.com www.aerosim.com



◀ "Guess who this was at 21, and NIFA contestant at 18, 19, & 20."

Welcome To All SAFECON Contestants

As your Safety Judge, and on behalf of my colleagues, have a wonderful and fun competition.

If you need help on the flight line, "Holler!!!"

And be sure to ask about the "Wally Stick."

Wally Funk, ATP flight Instructor, CFI AI, MEL, Air Safety Investigator, Gold Seal
Box 1219, Roanoke, Texas 76262-1219



SCHEDULE OF EVENTS

Friday, April 22

1200

Heat Assignments Posted

SAA (Salina Airport Authority) Hangar 509, Main Floor

Saturday, April 23

0800-1800

Arrival Briefing

SAA Hangar 509, Room 110

0800-1700

Registration

SAA Hangar 509, Room 110

0800-1700

Scheduled Landing Practice

SAA Hangar 509, Main Floor

Sunday, April 24

0800-1800

Arrival Briefing

SAA Hangar 509, Room 110

0800-1700

Registration

SAA Hangar 509, Room 110

0800-1700

Scheduled Landing Practice

Airport

0800-1700

Sign Ups:

SAA Hangar 509, Main Floor

Ground Trainer

IFR Simulated Flight

CRM/LOFT

Preflight

CFI Event

Achievement Interviews

Safety Interview

Loening Trophy Interview

1200-1800

CRM/LOFT Practice

as assigned

Monday, April 25

0800-1800

Arrival Briefing

SAA Hangar 509, Room 110

0800-1700

Registration

SAA Hangar 509, Room 110

0800-1700

Scheduled Landing Practice

Airport

0800-1700

Ground Trainer Practice

Aviation Center Avionics Lab

0800-1700

IFR Simulated Flight Practice

SAA Hangar 509, Trailer

0800-1700

CRM/LOFT Practice

as assigned

0800-1700

Preflight Aircraft on Display

SAA Hangar 509, Ramp

0800-1700

Sign Ups:

SAA Hangar 509, Main Floor

Ground Trainer

IFR Simulated Flight

CRM/LOFT

Preflight

CFI

Achievement Interviews

Safety Interview

Loening Trophy Interview

Tuesday, April 26

0800-1500

Arrival Briefing

SAA Hangar 509, Room 110

0800-1500

Registration

SAA Hangar 509, Room 110

0800-1500

Scheduled Landing Practice

Airport

0800-1500

Ground Trainer Practice

Aviation Center Avionics Lab

0800-1500

IFR Simulated Flight Practice

SAA Hangar 509, Trailer

0800-1500

Preflight Aircraft on Display

SAA Hangar 509, Ramp

0800-1500

Sign Ups:

SAA Hangar 509, Main Floor

Ground Trainer

IFR Simulated Flight

CFI

CRM/LOFT (late arrivals only)

Safety Interview

Achievement Interview

Preflight

Loening Trophy Interview

0800-1700

CRM/LOFT Event & late arrival practice

as assigned

1300-1500

Judges School

K-State at Salina, College Center Conference Room

1800

Opening Ceremony

Stiefel Theatre

1900-2000

Aircraft Recognition Event

Stiefel Theatre



SCHEDULE OF EVENTS

Wednesday, April 27

0800-1700	Navigation Event	SAA Hangar 509, Room 110
0800-1700	Ground Trainer Event	Aviation Center Avionics Lab
0800-1700	IFR Simulated Flight Event	SAA Hangar 509, Trailer
0800-1700	CRM/LOFT Event	as assigned
0800-1700	CFI Event	Aviation Center Room 118
0800-1700	Safety Interviews	Aviation Center Room 139
0800-1700	Loening Trophy Interviews	Aviation Center Room 140
0800-1700	Women's Achievement Interviews	K-State at Salina, West Hangar Room 100
0800-1700	Men's Achievement Interviews	K-State at Salina, West Hangar Room 102
0800-1700	Preflight Aircraft Event	Aviation Center Maintenance Hangar
1530-1700	Message Drop Event	Airport
1800-1930	Manual Flight Computer Event	K-State at Salina Recreation Center
1830-2000	Black Aviation Pioneers Panel (GlobalFlyer Viewing)	SAA Hangar 703

Thursday, April 28

0745-0800	Power Off Landing Event Briefing	SAA Hangar 509, Main Floor
0800-1400	Power Off Landing Event	Airport
0800-1700	Ground Trainer Event	Aviation Center Avionics Lab
0800-1700	IFR Simulated Flight Event	SAA Hangar 509, Trailer
0800-1700	CRM/LOFT Event	as assigned
0800-1700	CFI Event	Aviation Center Room 118
0800-1700	Safety Interviews	Aviation Center Room 139
0800-1700	Loening Trophy Interviews	Aviation Center Room 140
0800-1700	Women's Achievement Interviews	K-State at Salina, West Hangar Room 100
0800-1700	Men's Achievement Interviews	K-State at Salina, West Hangar Room 102
0800-1700	Preflight Aircraft Event	Aviation Center Maintenance Hangar
1500-1630	Message Drop Event	Airport
1700-1800	SCAN Event	K-State at Salina Recreation Center
1900-2100	Industry Reception	Rolling Hills Zoo

Friday, April 29

0745-0800	Short Field Landing Event Briefing	SAA Hangar 509, Main Floor
0800-1400	Short Field Landing Event	Airport
0800-1700	Ground Trainer Event	Aviation Center Avionics Lab
0800-1700	IFR Simulated Flight Event	SAA Hangar 509, Trailer
0800-1700	CRM/LOFT Event	as assigned
0800-1700	CFI Event	Aviation Center Room 118
0800-1700	Safety Interviews	Aviation Center Room 139
0800-1700	Loening Trophy Interviews	Aviation Center Room 140
0800-1700	Women's Achievement Interviews	K-State at Salina, West Hangar Room 100
0800-1700	Men's Achievement Interviews	K-State at Salina, West Hangar Room 102
0800-1700	Preflight Aircraft Event	Aviation Center Maintenance Hangar
1500-1630	Message Drop Event	Airport
1800-2200	Friday Night Social	SAA Hangar 509, Main Floor

Saturday, April 30

1000-1050	Conference Session 1	K-State at Salina, College Center Conference Room
1100-1150	Conference Session 2	K-State at Salina, College Center Conference Room
1150-1300	Lunch	
1300-1400	Conference Session 3	K-State at Salina, College Center Conference Room
1400-1500	NIFA Business Meeting	SAA Hangar 509, Main Floor
Immediately following	Team Captain's Meeting	SAA Hangar 509, Main Floor
Seating begins at 1730	Awards Banquet	Salina Bicentennial Center



CESSNA AIRCRAFT COMPANY



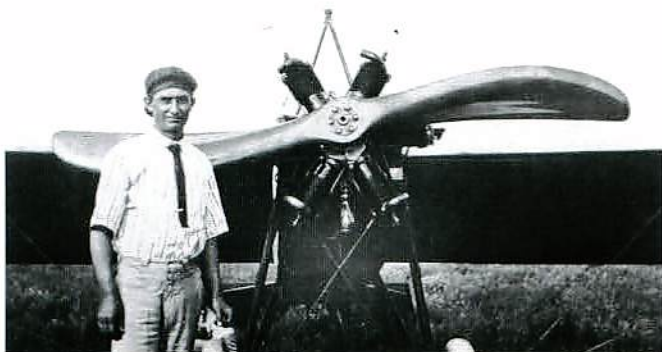
ALL CURRENT PRODUCTION CESSNA MODELS - 172, 182, 206, CARAVAN 208, CARAVAN 208B, CITATION MUSTANG, CITATION CJ1+, CITATION CJ2+, CITATION CJ3, CITATION BRAVO, CITATION ENCORE, CITATION XLS, CITATION SOVEREIGN, AND CITATION X.

When Clyde Cessna first flew Silver Wing in 1911, flight was a novelty. Little did he realize that he was establishing a tradition of innovation which – more than 185,000 aircraft later – would make Cessna Aircraft Company the world’s preeminent general aviation manufacturer.

Now in its 78th year, the Cessna Aircraft Company has become known as aviation’s only “Sure Thing.” Cessna has delivered over 185,000 aircraft, including over 150,000 single-engine piston airplanes, 24,000 twin-engine airplanes, 2,000 military jets and 4,200 Citations – the largest fleet of business jet aircraft in the world. More than half the aircraft flying today are Cessnas.

Even though the Cessna fleet is the most comprehensive and widely known of any other single aviation manufacturer, Cessna continues to have one main focus – the customer. This devotion is evident by Cessna’s continued investment in new products, services and people.

The following pages provide an overview of Cessna’s history and future.



CLYDE CESSNA STANDING BY ONE OF HIS EARLY AIRPLANES

Single Engine Piston Aircraft

Cessna has established the standard in the production of single and multi-engine piston powered aircraft for more than 50 years, delivering more airplanes than any other commercial manufacturer. In the late 1970s, the proliferation of product liability litigation involving general aviation aircraft caused a downturn and eventual interruption in light aircraft production during the late 1980s and early 1990s.

The passage of the General Aviation Revitalization Act of 1994, which established an 18-year Statute of

Repose, immediately resulted in the announcement that Cessna would return to the production of light aircraft after a ten-year hiatus. In December of 1994, the company announced the selection of Independence, Kansas, as the site for the assembly of its new generation model 172 Skyhawks, 182 Skylanes, and 206 Stationairs. Cessna broke ground for the new facility on May 19, 1995.

Less than 14 months later, on July 3, 1996, Cessna officially restarted production of single engine piston aircraft. Production line flow of the first Cessna piston engine singles since 1986 commenced on July 10, 1996, and the first customer delivery took place in January 1997 – a 172R Skyhawk. The first 182 Skylane delivery followed in April 1997. Deliveries of the 206 Stationair and T206 Turbo Stationair began in December 1998. In March 1998, Cessna introduced a new Skyhawk model designated the Skyhawk SP (“SP” for “Special Performance”). Initiated as a direct result of input from customers and Cessna Sales Team Authorized Representatives, the 172S Skyhawk SP provides increases in performance, useful load and overall capability.

At the 2000 National Business Aviation Association



TAKEN IN 1927, THIS FAMOUS PHOTO ADVERTISED THE STRENGTH OF HIS INNOVATIVE FULL-CANTILEVER WINGS (NO WING STRUTS), CLYDE CESSNA HAD 26 MEN AND 2 WOMEN STAND ON A PLANE’S WING IN A PUBLICITY STUNT TO SHOW THE STRENGTH OF WHAT WAS THEN AN UNUSUAL NEW AIRPLANE DESIGN.



CESSNA AIRCRAFT COMPANY



ALL CURRENT PRODUCTION CESSNA SINGLE ENGINE PISTON AIRCRAFT ARE AVAILABLE WITH THE FULLY INTEGRATED, ALL-GLASS GARMIN G1000 AVIONICS SUITE.

Convention, Cessna unveiled the addition of two new models to the single engine product line: 182T Skylane and T182T Turbo Skylane. Improving on the already successful 182S Skylane model, the 182T Skylane and T182T Turbo Skylane feature new aerodynamic changes to improve cruise speed and the latest avionics teamed with a heightened level of style and comfort. Customer deliveries began in 2001.

Cessna set a course of teaching the world to fly with an all-glass, jet-like, fully integrated avionics suite in October 2003. Today, all Cessna single engine airplanes can be delivered with the fully integrated Garmin G1000 system. The G1000 avionics suite is the most advanced flight deck package to fly on a single engine piston aircraft. The system eases pilot workload and offers a new level of safety and situational awareness during all phases of flight.

Cessna Pilot Centers

In addition to delivering more aircraft than any other manufacturer, Cessna has taught more people to fly than any other company. Over half a million people have learned to fly through Cessna's worldwide network of Cessna Pilot Centers (CPCs) since the concept was introduced over 30 years ago. Today, nearly 300 flight schools are in the worldwide network. Students taking flight lessons at CPCs use

Cessna's exclusive Computer Based Instruction (CBI) or Instrument Computer Based Instruction (ICBI) program, which is the only fully integrated flight training system available today. The CBI and ICBI programs were developed in partnership with King Schools, Inc. of San Diego, California. Cessna's CBI and ICBI programs became available in 1998 and 2000, respectively.

Caravan Turboprops

In 1985, Cessna began deliveries of the new Caravan, a single engine turboprop utility aircraft that carries cargo loads of up to 4,682 lbs., or up to 14 passengers, or a combination of the two. The Caravan worldwide fleet numbers over 1,400 aircraft. Available in four models – the Caravan 675, Caravan Amphibian, Grand Caravan, and Super Cargomaster – Caravans have distinguished themselves in special-missions applications, scheduled airline/commuter service, and locations with unimproved, short runways.

A specially designed version of the Caravan is in service with Federal Express and over 300 Caravans have been delivered to the overnight delivery pioneer. The Caravan is the only single-engine aircraft approved by the U.S. Postal Service to carry the U.S. Mail.



THE CARAVAN HAS PROVEN ITSELF TO BE ONE OF THE MOST RELIABLE, VERSATILE, AND COST-EFFECTIVE AIRPLANES EVER BUILT.



CESSNA AIRCRAFT COMPANY

Citation Business Jets

Cessna launched a new era in business aviation when it introduced the original Citation at the 1968 National Business Aircraft Association Convention. The new business jet was quieter, simpler, more capable of operating safely in and out of short fields, substantially more fuel efficient, and much less expensive to own and operate than any other business jet on the market or the drawing board. In January 1972, four years later, Cessna delivered the first Citation.

In 1976, the company dramatically increased its leadership role by announcing three new business jets: the improved Citation I; the larger, better-performing Citation II; and the Citation III.

The progression of the Citation model line through the 1980s brought customers faster, more comfortable and efficient aircraft with the latest in new technology. These new products solidified Cessna's leadership role in the business jet market.

In October 1990, Cessna took an industry setting step when it introduced the Citation X. Flying at .92 Mach, or 600 mph, the Citation X is the world's fastest civilian aircraft. Only military aircraft are faster. The new Cessna flagship accomplished its first flight in December 1993 and was certified on May 31, 1996. The first Citation X was delivered to golf legend and Citation pilot, Arnold Palmer, in August 1996. In February 2002, Cessna delivered the first of the new series of upgraded Citation Xs, also to Arnold Palmer. More than 225 Citation Xs are now in service.

Cessna continued to announce new and innovative products into the new millennium. These new products brought Cessna's Citation family to an impressive nine new Citation models.

One of Cessna's most successful new product announcements was the Citation Mustang. At the 2002 NBAA Convention in Orlando, Florida, Cessna took the industry by surprise when it announced the Citation Mustang – an aircraft destined to fill the



THE CITATION X IS THE FASTEST BUSINESS JET EVER BUILT - AND IT IS ONE OF THE MOST EFFICIENT.

enormous void in the turbine aircraft market. The Mustang provides more speed, range, and altitude capability than currently offered by any single or multi-engine piston or turboprop aircraft. Cessna has taken over 230 aircraft orders for its newest airplane, and expects to deliver the first one to a customer in late 2006.

Today, Cessna's Citation business aviation leadership spans over 30 years. The Citation fleet of business jet aircraft, based in over 75 countries, is the largest in the world by a full 50 percent over the nearest competitor. The over 4,200 Citations operating today have logged nearly 17 million flight hours. Cessna's current Citation product line includes the Citation Mustang, Citation CJ1+, Citation CJ2+, Citation CJ3, Citation Bravo, Citation Encore, Citation XLS, Citation Sovereign, and Citation X.

Citation Service Centers

To compliment Cessna's extensive Citation product line, Citation customers are provided with around-the-clock, seven-days-a-week support through a



CESSNA AIRCRAFT COMPANY



THE BRAND NEW CESSNA SERVICE CENTER LOCATED IN WICHITA, KANSAS. THE 443,000 SQUARE FOOT FACILITY TOOK NEARLY 3 YEARS TO BUILD AND SPANS A DISTANCE OF 1,600 FEET. THE SPACE INCLUDES THREE 60,000 SQUARE FOOT MAINTENANCE HANGARS, ONE 40,000 SQUARE FOOT MAINTENANCE HANGAR, AND A 27,000 SQUARE FOOT DETAIL AND PAINT SHOP. THE CENTER IS EXPECTED TO SERVICE APPROXIMATELY 100 AIRCRAFT PER DAY.

network of company-owned Citation Service Centers, strategically located at nine major U.S. airports, as well as Paris, France. In addition, authorized service stations for Citations are located in more than fifteen countries.

Cessna opened two new Citation Service Centers in 2004 in Wichita, Kansas, and Orlando, Florida. The Wichita Citation Service Center is the world's largest general aviation maintenance facility. The 443,000 square foot facility can house over 100 Citations at any time.

Looking Forward

As Cessna looks ahead to the future, new designs are taking shape on its drawing boards and Cessna team members are preparing to meet the challenge of new markets and ever increasing competition. While

looking ahead to the future, Cessna will continue to keep its focus on customers.

Thank You to NIFA

Cessna would like to thank all of the SAFECON 2005 participants for devoting their time and energy to this important program. Cessna has been a NIFA partner for almost 60 years and we consider it an honor to continue doing so today. We recognize that NIFA participants are the best college aviation has to offer. We are proud of what you have contributed to the industry so far, and we look forward to seeing what you will contribute in the future. We wish you the best as you pursue your aviation career!

CESSNA AIRCRAFT COMPANY
WWW.CESSNA.COM

ETA – Comprehensive Flight Training Management

Highlights

- ✓ Online Scheduling
- ✓ Flight, Sim, Academic & Oral Events
- ✓ Student Training Management
- ✓ Resource Utilization Management
- ✓ Curriculum Control/Management
- ✓ Electronic Syllabi
- ✓ Qualification/Currency Management
- ✓ Instructor Performance Measurement
- ✓ Dispatch / Flight Following
- ✓ Track Training Objectives
- ✓ Electronic Grade Book/Training Data
- ✓ Cashier Integration
- ✓ Merchandise Sales Function
- ✓ Instructor Payroll Integration
- ✓ Electronic Document Storage
- ✓ Management Alerts
- ✓ Internal electronic messaging
- ✓ Controlled and Protected Access
- ✓ 130+ Electronic Management Reports



Benefits

- ✓ More profitable flight operation
- ✓ Reduces student training cost
- ✓ More competitive flight training program
- ✓ Accurate, real-time, detailed records
- ✓ Immediately access student training data
- ✓ Eliminates cost of auditing training records
- ✓ Quickly identify program problem areas
- ✓ Tools for continuous program improvement
- ✓ Risk management alerts and information
- ✓ 100% web based system
- ✓ Real-Time Use from Anywhere at Anytime!
- ✓ Affordable for any size training operations



BRIDGEWATER STATE UNIVERSITY



Front row: Matt Romano, Rufaro Gomwe, Mike Pollak, Dan Ware (captain)

BROWARD COMMUNITY COLLEGE



John Lawler, Region 9 NIFA Counsel Representative, Thiago Anjos, Top Pilot



CENTRAL MISSOURI STATE UNIVERSITY



Front row: Kaleb Lusby (Team Captain), Shane Soligo, Chris Schrodt, Adam Gregory (Team Captain), Neil Tornblom (Team Captain)
Back row: Eric Meyer, Justin Carlson, Justin Marx, Devin Thompson, Michael Collins, Dr. Bill Caldwell (Team advisor)
Not pictured: Steven Brown, Toru Suda (Coach)

CENTRAL TEXAS COLLEGE



Back row: Daniel Donahoe, Ryan Gomez, Ben Boughton, Jacob Costa, Sean McGrath, Robert Anderson, Steve Nosewicz, Nick Long
Front row: Keith Ely, Daniel Miller, Kyle Bolivar, DJ Horning, Kristina Trygstad, Marshall Collins



CHRISTIAN HERITAGE COLLEGE



Kneeling: Cory Woodsum, Seth Wells
 First row: John Voss (Coach), David Saenz, Bethany Saxman, Josh Masopust, A.J. Weimer, Graeme Koch
 Second row: Bill Liniewicz, Roger Chappuis, Daniel Duncan, David Smith, Bill Carpenter, Adam Peterson, Jonathan Morse
 Back row: John Greenstone, Joel Cohick

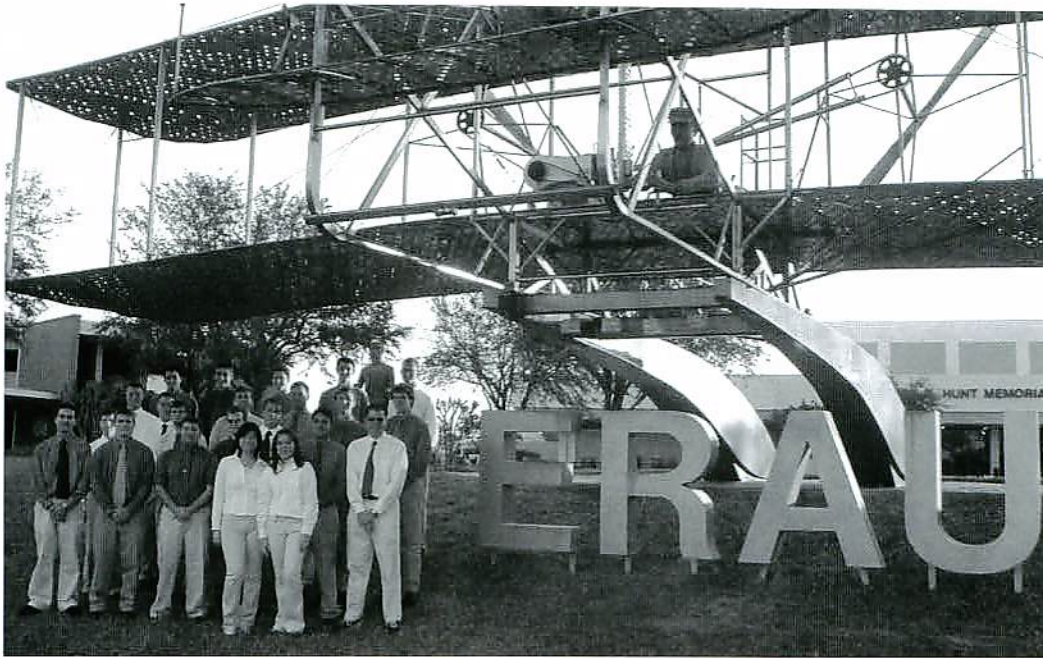
DELTA STATE UNIVERSITY



Back row: Ray Glasgow (Advisor), Jon Robertson, Nic Harrison, Ben Dedwylder, Joe Wheeler, Matt Phillips, Lee Cockrill
 Front row: Jonathan Ledford, Andrea Hammerton, Joseph Seaboldt



EMBRY-RIDDLE AERO. UNIV. - DAYTONA



4th row: Eric Santos, Zack Welsh, Caleb Wilcox, Will Broderick, Phil Siess
 3rd row: Jonathan Rupp, Dan Thurber, Brenden Cantwell, Brian Petricone, Greg Gilger, Eric Speckman
 2nd row: Nathan Vanagas, Spencer Marker, Matt Rumboldt, Ryan Bertsche, Chris Rivera, Dave Krochmal
 Front row: Nate Carrillo, Brady Harp, Pat Herrmann, Natsu Okiyama, Moraima Egurbida

K-STATE AT SALINA



Back row: Troy Brockway (Coach), Darrin Smith, Andrew Waterland, Matt Werth, Dan Kozak, Brandon Voorhees, Jeff Wheeler, Mitchell Ochs (Coach)
 Front row: Jill Hudson, David Little, Orlando Carmona, Pat Rinearson, Thomas Kemp, Micah Westblade, Daniel Leebrick
 Not pictured: Cody Honeyman, Lindsey Boeckman, David LaCore



LETOURNEAU UNIVERSITY



Front row: Andy Christensen, Sam Lloyd (Captain), Roger Braun, Daniel Chiew
Back row: Ethan Presson, Eugene Sung, Laura Laster (Coach), Emily Harrison, Brandon Ray, Esther Topham (Coach)
Not pictured: Tom Anderson (Captain), Ted Whitten

LIBERTY UNIVERSITY AVIATION



Left to right: Cameron Price, Chris Morse, Jonathan Bullock, Justin Sanders, Anthony Beckles, Josh Clark, CJ Esh, and Charlie Llewellyn



METROPOLITAN STATE UNIVERSITY AT DENVER



Front row: Eric Weaver, Eric Peterson, Andrew Todd, Grant Mugge, Nick Chernoff, Ean Biggs, Sean Cowan, Jason Burnett, Randy Ingalls, Keith Yingling
 Back row: Mike Schutte, Curtis Malone, Derek Wolfe, Chris Oldenberg, Arshdeep Kaur, Harold Caulkins, Omar Shakoor
 Not pictured: Kris Kelly, Eric Peterson, Garrett Boetcher, Mike Pennington, Alex Brancard.

MERCER COUNTY



Back row: Diane Loving (Advisor), Richard Osborn (Team Captain), Evan Conley, Jacob Copeland, Dean Tzitzis, Gary Latham, Jonathan Turman (Coach)
 Front row: Adam Feldman (Safety Captain), Priyang Vyas, Edson Jerez.
 Not pictured: John Tokash



MT. SAN ANTONIO COLLEGE



Top row: Daniel Reasons, Ruben Murrieta (Safety Officer), Kristina Barnwell (Loening Officer), Amanda Sloan, Brett Bye (Team Captain), Lellius Rose, Adam Tissot (Team Coach), Kevin Bannon (Team Coach)
Bottom row: Matt Harmon, Dan Obergfell, Trinity Stanley (Loening Officer), Mike Svensson, Stephen Samuelian, Bryce Gordon (Safety Officer)

THE OHIO STATE UNIVERSITY



Front row: Steve Williams (Captain), Luke Stouffer (Captain), Adam Stiffler (Captain), Richard Ward, JT Hearn, George Burger, Josh Yurman, Christina Kurowicky, Kyle Sleeper, Kelly Hoffman, Jim Gursky, Kristi Rodriguez, Wes Polsley, Michael Holmes, Travis Macowiak, Ben Thoennes
Back row: Scott van Ooyen (Coach), Kyle Ribar (Asst. Coach), Emily Egbers (Asst. Coach), Brian Hart (Asst. Coach), Aaron Snyder (Asst. Coach), Tim Cross (Asst. Coach)
Not pictured: Avin Chakravarti, Jason Smith, Laci Watkins (Asst. Coach), Nate Spahr (Asst. Coach)



OHIO UNIVERSITY



On the ground: Katie Ventresco (Coach), Brian Buescher (Coach), Rob McCoy, Christopher Buehler, Mark Zehner, Darrick Helmuth, Tiffany Perl, Ben Frazier, Anthony Amos, Deak Arch (Advisor), Juan Merkt (Department Chair), Jeff Rambadt (Coach)

On the plane: Johann Gebauer, Brookelyn Black, George Armann, Karrie Shank

Not pictured: Chris Priest

OKLAHOMA STATE UNIVERSITY



Back row: John Bradley, Jon Randall, Preston Melhauser, Eddie Edison, Cody Downes, Brad Jordan, Levi Sleeper, Jason Craig, Ryan Winkler, Britni Thompson, Paul Myers, Chris Rhodes, Ross Hensley

Front row: Jordan Davis, Jason Guillet, Logan Emig, Jen Fink, Casey Randall, Kevin Dinsmore



PURDUE UNIVERSITY



Back row: Geraldine Fritsch, Mark Flood, Shaun Gerber, Matt Flood
 3rd row: Jon Nehrbass, Ryan Nichols, Matt Anderson, Joe McNamee, Mike Friedlund, John Schumacher, Chris Huffman, Andrew Finley, Walt Lacy
 2nd row: Pascal Nguyen, Danielle Kaskel, Stefanie Gates, Patti Keen, Ryan McCombs
 Front row: Prof. Larry Gross, Ryan Beisel, Paul Lucas, Dan Keen

SOUTHEASTERN OKLAHOMA STATE UNIVERSITY



Front row: Sammy Turner, Lauren Bastian, Jason Bulleit, David D'Alessandro
 Back row: Jarred Murphy, Matthew Willloth, Chris Ferguson, Charlie Ross, James Lavender, Adam Krafcheck
 Not pictured: Zach Shuster



SOUTHERN ILLINOIS UNIVERSITY



Back row: Bryan Harrison (Coach), Matt Clevenger (Coach), Miranda Hill (Coach), Tim Cipolla (Co-Captain), Doug Gibbs (Co-Captain), Nate Lincoln (Coach), Mike Frette (Head Coach), Kim Carter (Academic Advisor)
 Middle row: Pat Skonic, Bill Gersch, Jon Greene, Brandon Crowd, William Strauthers, Jeremy Baiman, Garrett Hackett
 Front row: Sabrina Weber, Ryan Warren, Eric Miller, Jennifer Byrne, Alex Kemps, Eric Greener

SPARTAN COLLEGE OF AERONAUTICS & TECHNOLOGY



Back row: Kristen Hynes (Coach), Jason Stephens, Travis Shumway, Brian Thurman, Matthew Kuechle, Chad Twogood (Coach)
 Front row: Robert McPhail, Anthony Martin
 Not pictured: Jason Leshar, Eric Cannon, Jeremy Peterson (Coach), and Lloyd Lane (Coach)

ST. CLOUD STATE UNIVERSITY



Back row: Ben Lawler, Steve Reese, Joe DeRose, Aaron Peterson, Jason Jones, Grant Fitzer, Ryan Moore, Dr. Steven Anderson (Advisor)
Front row: Matthew Cramer, Jeff Welch, Matt Dieringer, Troy Michaud, Nick Hoeschen, Shanna Lowe

UNITED STATES AIR FORCE ACADEMY





UNITED STATES NAVAL ACADEMY



Front row: William Kelly, Andrew McCaffrey, Diana Beauford, Michael Droogleever, Adrian Kellgren
 2nd row: Chris Karaposteles, Bill Lipstreu, Seth Squyres, John Stouffer, Grant Jarvis
 3rd row: Jeff Eller, Arlo Swallow, Kilton Kingsman, Mike Hartenstine
 Not pictured: Denver Amerine, LT Mike Norton, LT Bart Phillips

UNIVERSITY OF ILLINOIS



Left to right: Alex Waterloo, Bryce Haselhorst, Rob Olsen, Brittney Miculka, Andy Schneider, Lance Lutchen, Zach Currier, Steve Boyd, David Stevens, Jon Miller, Jordan Clark, Colin Holbrook



WESTERN MICHIGAN UNIVERSITY



Back row: Steve Tkachuk (Coach), Thomas Grossman (Coach), Robbie Beechuk (Co-Captain), Garrett Heinz, Marc Kobaiissi (Asst. Coach), Chris Long (Alternate), Brandon Jones (Alternate), Jellani Kelley, Tyler Rice, James Whittles (Head Coach)
 Middle row: Chris Reif, Ben Lauer, Ian Alexander (Co-Captain), Travis Epp, Jennifer Jakubiec, Josh Niedzwiecki, Patrick Jacobs, Morad Leeal, Blake Koehn
 Front row: Amanda Evans, Topa Augustine

WESTMINSTER COLLEGE



Back row: Sean Lapsley (Asst. Coach), Tyson Frost, Jeff Leeman, Justin Dhondt (Captain), Tyson Aoki, Mark Worthley, Nate Ashment
 Front row: Ben Bigelow (Head Coach), Brett Anderson (Asst. Coach), Ryan Davis, Thad O'Connell, Jeremy Degagne



PARTICIPATING TEAMS NOT PICTURED

Embry-Riddle Aeronautical University - Prescott
Florida Institute of Technology
Jacksonville University
University of North Dakota

A note of thanks to

**FRASCA
International, Inc.**

for providing the news in
the "SAFECON Daily".

*Our sincerest
thanks*



*to Cessna Aircraft Company
for their sponsorship of the
Awards Banquet*

The United Pilots wish the best of luck to all NIFA Competitors!

Steven Brazao

Robert Fischer

Brian Florence

Charlie Kalvoda

Kevin Sprague

Joel Lehrke

David McCoy

Roger Mapel

Dale Nordhausen

Kim Strickland

William Norteman

Eric Popper

Kevin Simecek

David Smith

Sargent

Sponsor of the Ground Events Champion Award

ADVANCED COCKPIT TRAINER



**FAA APPROVED
A.A.T.D.**

ADVANCED AVIATION TRAINING DEVICE

Instrument -20 hrs
Commercial- 50hrs
ATP- 25hrs
IPC and more...

Perfect For:

CRM

LOFT

Jet Procedures

FMS Procedures

Glass Transition

Navigation Training

Autopilot Procedures

Emergency Procedures

A.A.T.S. A.C.T.

Precision Flight Controls, Inc.

916-414-1310 ext 11 fax 916-414-1326 www.flypfc.com



***The students of NIFA
would like to extend a very
special "THANKS!" to the following
Ninety-Nines who have made
donations to NIFA during the
past competition year!***

SECTIONS:

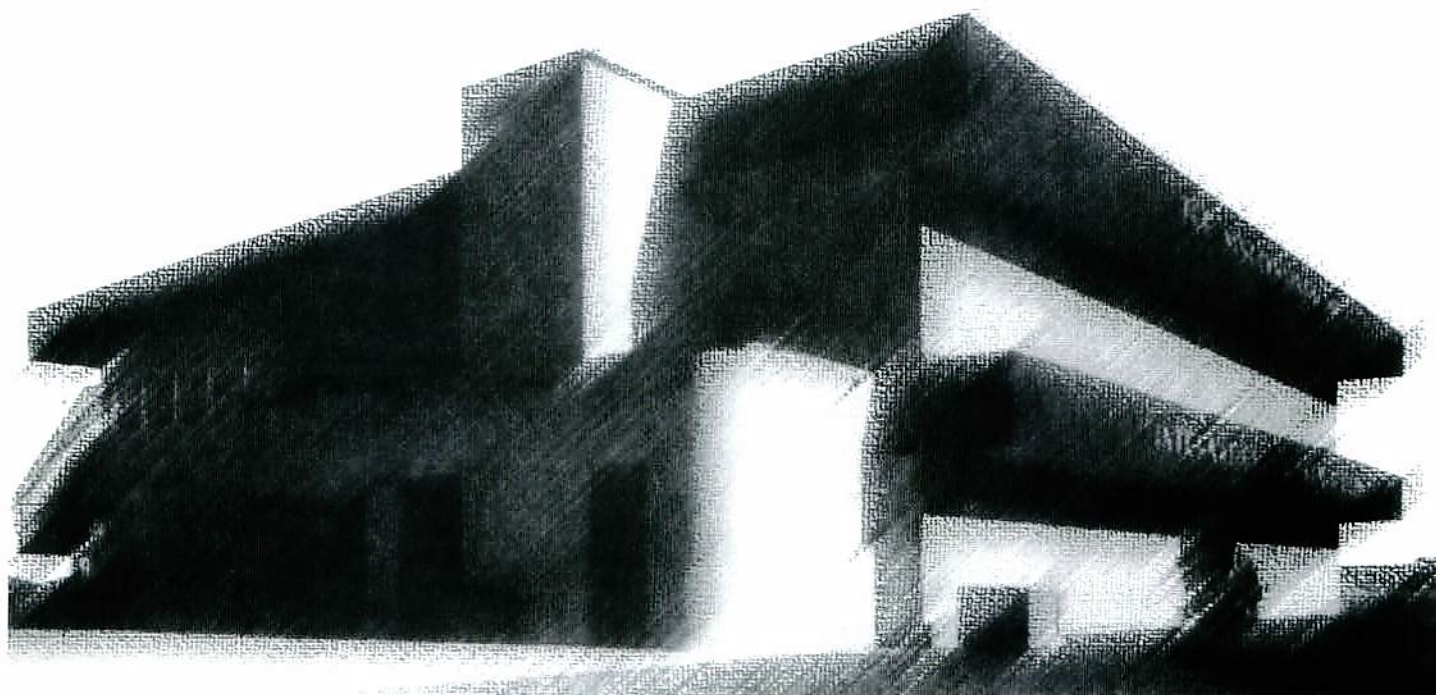
North Central
Northwest
South Central

CHAPTERS:

Brazos River
Central New York
Golden Triangle
Greater Detroit
Houston
Idaho
Lake Erie
Monterey Bay
North Dakota
San Gabriel
Wisconsin

INDIVIDUALS:

Bonita Ades
Virginia Harmer
Betty Huck
Elaine Morrow
Poochie Rotzinger
Lewie Wiese



*The Ninety-Nines Headquarters Building
Will Rogers World Airport - Oklahoma City, Oklahoma*

A special thanks to

Avfuel CORPORATION

*for keeping our contestants
gassed up and flying.*

K-STATE AT SALINA BOOKSTORE

**FORGOT SOMETHING?
NEED SOMETHING NEW?**

**THEN VISIT THE BOOKSTORE IN THE
K-STATE AT SALINA COLLEGE CENTER
FOR WICHITA SECTIONALS, AFDS,
FLASHLIGHTS, BATTERIES, PLOTTERS,
AND E6-BS!**

**K-STATE AT SALINA BOOKSTORE (785) 826-2923
8-5 (M-F) AND 9-1 (SAT)**

A big Thank You to all of this year's sponsors!

We appreciate all you have done!

Aerosim-Mechtronix
Air Line Pilots Association
Air Tractor
Aircraft Owner's & Pilot's Assoc.
Alltel
Alpha Eta Rho - Kappa
 Sigma Upsilon
American Eagle Airlines, Inc.
Ameriserve
Avfuel Corporation
Aviation Supplies & Academics
Best Western Heart of America Inn
Best Western Mid-America Inn
Blackwell Publishing Professional
Candlewood Suites
Cessna Aircraft Company
Charles Reagan
Comfort Inn
Continental Connection
Country Inn & Suites
David Clark Company
Delta Air Lines
Dennis Kuhlman
Diamond Aircraft
DTC DUAT Service
Fairfield Inn
FlightSafety Academy
FlightSafety International
Flower Aviation
Frasca International
Gary Hemphill
GenAv Systems, LTD
General Aviation
 Manufacturers Assoc.
Hampton Inn
Hemphill Family

Henry Helgerson Company
Hickory Tree Restaurant
Holiday Inn Express
Jeppesen
Jet Aviation
Joel Lehrke
John Haacke
King Schools, Inc.
K-State at Salina Bookstore
K-State at Salina faculty, staff,
 and students
Limpwindsock.com
Lockheed Martin Corporation
Lowrance Electronics, Inc.
Martinelli's Little Italy
Mid-America Awards
National and Regional
 SAFECON Judges
National Business Aviation Assoc.
NetJets, Inc.
NIFA Foundation
NIFA/AHP Alumni Association
Phi Delta Theta - Kansas Eta
Phoenix Aviation Managers
Pilatus Business Aircraft
Preferred Entertainment
Red Coach Inn
Red Lobster
Rolling Hills Zoo
Salina Air Traffic Control Tower
Salina Airport Authority
Salina Bicentennial Center
Salina Motorsports
Serene Photography
Sharon Cristler
SignPro

Southwest Airlines
Sporty's Pilot Shop
Steve Fossett
Stiefel Theater For the
 Performing Arts
Students in Free Enterprise Club
Sunflower Marketing
Talon Systems
Texas State Technical College
The New Piper Aircraft
The Tuskegee Airmen
Trade-A-Plane/TAP
 Publishing Company
TRIO
United Airlines Pilots
University of Nebraska-Omaha
University of North Dakota
Viner Family
Wally Funk
Weesner Family
Women in Aviation International -
 K-State Chapter

A special thanks to:

Nic Colgrove
for working with the NIFA Officers
and designing the logo and cover
page of the 2005 NIFA SAFECON
Program.

James Martin of Martin Publishing
www.Martin-Publishing.com
for the design and layout of the
2005 NIFA SAFECON Program

Thanks to the
Red Coach
Inn

for providing the
NIFA Judges
with a meal!

UND AEROSPACE
UNIVERSITY OF NORTH DAKOTA

John D. Odegard School of Aerospace Sciences

▲ ▲ ▲
University of North Dakota

Grand Forks, North Dakota

flyund@aero.und.edu

(800) 258-1525 ▲ (701) 777-2791

www.aero.und.edu

Best of luck to all participants!



*A note of thanks to
The New Piper Aircraft, Inc.*



*for sponsoring the
Industry Social*

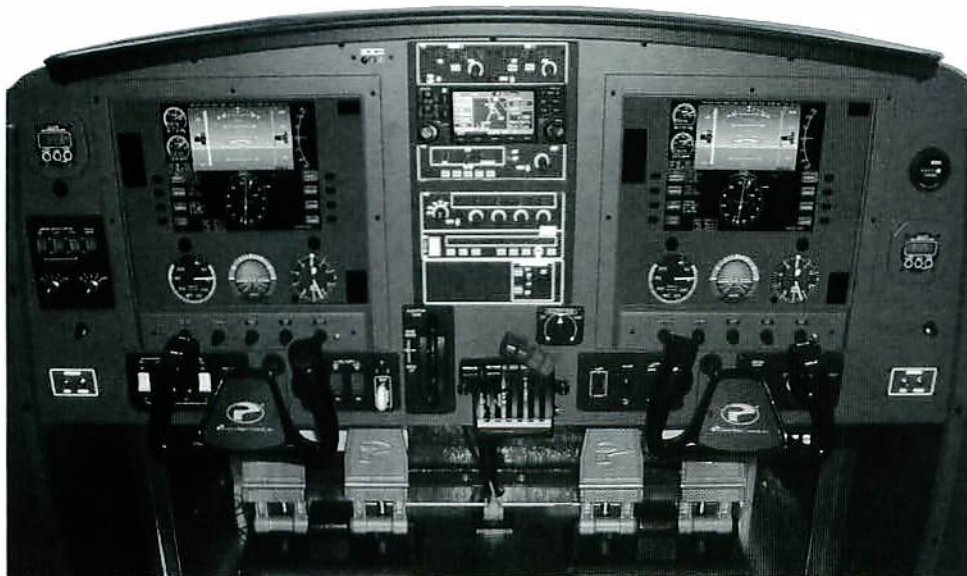
Piper
Freedom of flight

*A special thanks to
NetJets, INC.*



*for their sponsorship of
the Student Social*

MFD-TAA Modular Flight Deck for Technically Advanced Aircraft (coming soon)



**MFD (current model)
FAA APPROVED**

for:

**Private 2.5 hrs
Instrument -20 hrs
Commercial- 50hrs
ATP- 25hrs
IPC and more...**

Perfect For:

**Single Engine
Multi Engine
CRM
Glass Technology
GPS Navigation
Garmin 430
Emergency Procedures**

"Analog type or Glass Instruments"

A.A.T.D. ADVANCED AVIATION TRAINING DEVICE



Precision Flight Controls, Inc.

916-414-1310 ext 11 fax 916-414-1326 www.flypfc.com





NIFA REGIONS

Region 1

Colorado Northwestern Community College
 Metropolitan State College of Denver
 Rocky Mountain College
 United States Air Force Academy
 Utah Valley State College
 Westminster College

Region 2

Christian Heritage College
 Cypress College
 Embry-Riddle Aero. Univ. - Prescott
 Mt. San Antonio College
 Orange Coast College

Region 3

Andrews University
 Kent State University
 Ohio University
 The Ohio State University
 University of Cincinnati
 Western Michigan University

Region 4

Central Texas College
 Delta State University
 LeTourneau University
 Louisiana Tech University
 Northwestern State University
 Texas Southern University
 Texas State Technical College
 University of Louisiana at Monroe

Region 5

Iowa State University
 Minnesota State Univ. at Mankato
 St. Cloud State University
 University of Dubuque
 University of North Dakota

Region 6

Central Missouri State University
 Kansas State University
 Oklahoma State University
 Parks College
 Spartan College of Aeronautics
 Southeastern Okla. State Univ.
 Tulsa Community College
 University of Nebraska at Omaha
 University of Oklahoma

Region 7

Bridgewater State College
 Dowling College
 Mercer County Community College
 Rensselaer Polytechnic Institute
 Schenectady County Comm. College

Region 8

Eastern Kentucky University
 Indiana State University
 Lewis University

Middle Tennessee State University
 Purdue University
 Quincy University
 Southern Illinois University
 University of Illinois at Urbana

Region 9

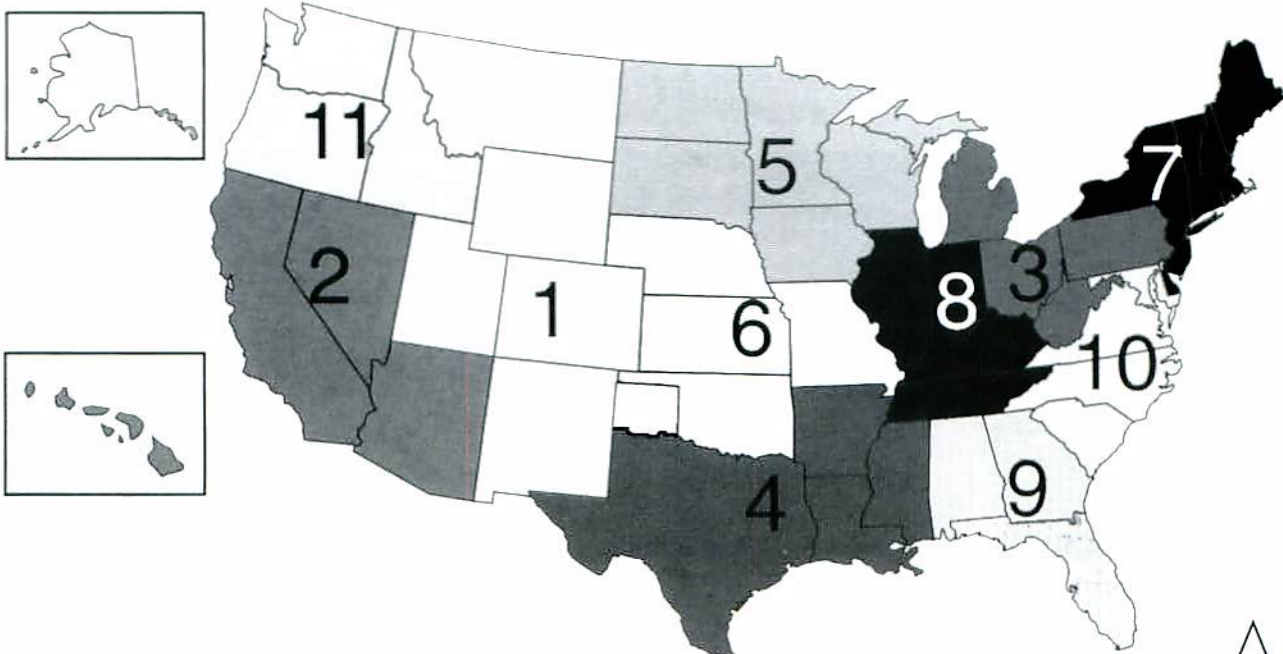
Auburn University
 Broward Community College
 Embry-Riddle Aero. Univ. - Daytona
 Florida Institute of Technology
 Jacksonville University
 Lynn University
 Miami-Dade Community College

Region 10

Averett University
 Caldwell Comm. College & Tech. Inst.
 Guilford Comm. & Technical College
 Hampton University
 Liberty University
 Lenoir Community College
 United States Naval Academy
 Virginia Tech University

Region 11

Central Washington University



Order Pizza for Delivery to Your Hotel!



Better Ingredients. Better Pizza.®

PAPA'S SPECIALTIES

Delivery or Carryout

Small	Medium	Large	XLarge
9.99	12.99	15.99	17.99
Barbeque Chicken & Bacon Spinach Alfredo Chicken Tomato	Hawaiian Barbeque Chicken The Works™	Grilled Chicken Alfredo All the Meats™ Chicken Club	Spicy Meatball Sicilian Meats
Small	Medium	Large	XLarge
9.99	12.99	14.99	16.99
Garden Special™ Spinach Alfredo Spicy Italian			

BUILD YOUR OWN

	Small	Medium	Large	XLarge
One Topping	7.99	9.99	12.99	14.99
Additional Toppings	.89	1.39	1.49	1.69
Ham, Pepperoni, Italian Sausage, Sausage, Ground Beef, Bacon, Anchovies, Extra Cheese, Mushrooms, Onions, Black Olives, Green Peppers, Jalapeño Peppers, Banana Peppers, Pineapple, Grilled Chicken, Roma tomatoes				

SIDES

Papa's Wings (10 Wings)	6.99
Spicy Buffalo, Mild Chipotle BBQ	
Papa's Chicken Strips (7 strips)	4.99
Cheesesticks	4.49
Breadsticks	3.49
Cinnapie	2.99
Extras	.30
Garlic Sauce, Cheese sauce, Pizza Sauce, Pepperoncinis	

DRINKS

Coca-Cola® Classic, Sprite®, Diet Coke® or Sprite ReMix®	
Two Liter	2.49
20 oz.	1.29
Coke® 4-to-Go Pack	3.99

ORDER ONLINE!
www.rcppapajohns.com

PARTY SPECIAL!

30% OFF
Regular Price for 5 or More Pizzas
Any Time!

1650 S. Ohio St.

(785) 827-7575

Mon.-Thurs. 11am-11pm; Fri. & Sat. 11am-Midnight; Sun. 11am-9:30pm

PAPA'S PIX

Specialty or Up-to-3-topping Pizza

LARGE
\$11.99

MEDIUM
\$8.99

Add a 2nd Pizza

Large **\$8.00**

Medium **\$6.00**



PIZZA & WINGS

ONE LARGE
Up-to-3-Topping Pizza
& and order of Papa's Wings

\$15.99



Coupon not required. Valid at participating store only. Limited delivery area. charges may apply. Customer responsible for all applicable taxes.

Coupon not required. Valid at participating store only. Limited delivery area. charges may apply. Customer responsible for all applicable taxes.

“My career with ASA started at the FlightSafety Academy.”



RYAN VANCE, CRJ First Officer with Atlantic Southeast Airlines (ASA), a Delta Connection carrier and wholly owned subsidiary of Delta Airlines

Vance, a 23-year-old Illinois native, received his private pilot's license in 1998. He then entered FlightSafety Academy in January 2000, where he earned his commercial instrument and multi-engine ratings. While at Vero Beach, Vance learned the academy and ASA offered a new program to prepare pilots for employment with the regional airline.

In July, following an interview, Vance was accepted into the ASA Pilot Training Program. By that October he was a First Officer with ASA flying a Canadair Regional Jet.

ONCE I DECIDED TO BECOME A PILOT, I WANTED to get there as fast as I could,” recalls Ryan Vance, a First Officer with Atlantic Southeast Airlines (ASA) and member of the first class of pilots graduating from FlightSafety Academy’s ASA Pilot Training Program. “I looked at different training programs, but when I found out about the academy, I knew it was the place for me.”

FlightSafety Academy’s wealth of training resources – three full-flight simulators, a fleet of nearly 100 single- and twin-engine aircraft, and a large staff of experienced instructors – allows future professionals to achieve the necessary ratings quickly and with a high degree of proficiency. And the opportunities that come from being part of the world’s largest aviation training organization – such as the new ASA Pilot Training Program – put qualified cadets on the fast track to a successful flying career.

In fact, less than a year after arriving at the academy, Ryan had earned his CIME and was operating from the right seat of an Atlantic Southeast Airlines CRJ.

“FlightSafety Academy really prepared me for what I was going to see next,” he adds. “It got me where I wanted to be, when I wanted to be there.”

FlightSafety
international

ASA Training Begins at www.FlightSafetyAcademy.com

For more information, contact the FlightSafety Academy at: (800) 800-1411 or (561) 564-7650. Or write us at P.O. Box 2708, Vero Beach Airport, Florida 32961. www.FlightSafety.com

FLIGHTSAFETY ACADEMY AT VERO BEACH, FLORIDA

Change is in the Air.



JEPPVIEW

**Times change.
So should your charts.**

From the company that 70 years ago literally invented the aeronautical chart comes the next big advance. With the introduction of the latest JeppView innovations Jeppesen is defining a new standard.

JeppView is the total electronic chart solution, offering ready access to vector-based, geo-referenced electronic terminal and enroute charts, both on the ground and in the air. The unique design of JeppView's FliteDeck interface makes in-flight use easy and intuitive, and coupled to a GPS delivers unmatched situational awareness. On the ground, JeppView takes all the work out of information management.

Additional JeppView advances include electronic text, revisions available via the Internet and a patent pending RoutePack feature that lets you exchange route information between Jeppesen applications.

For more information, call us at 800.621.5377 or visit

www.jeppesen.com.

JEPPESSEN
Making Every Mission Possible

Note: Some functionality described above not yet available for MX20, Primus Epic with INAV, Proline 21 Continuum, Northstar and UCD.

get into the
go fly zone



Get into Trade-A-Plane, the world's largest aviation resource. Shop 1000s of planes, products and services in print and online. It's everything that keeps you flying—and a whole lot more. Plus, the print edition includes free access to our website, now **totally searchable** (including display ads and classifieds). Subscribe today for as little as \$14.95!

Trade-A-Plane[®]

The Aviation MarketPlace

800.337.5263 • Trade-A-Plane.com

Preview our website **FREE** now through May 21, 2005, with **NO OBLIGATION!** Just go to **Trade-A-Plane.com** and enter **SAFECON5** as both the User Name and Password.

Train now or
retrain later.



Glass cockpit now available in the Warrior, Archer and Arrow!

You know that today's student pilots demand cutting edge technology – and if they're airline-bound they'll need to learn to fly the glass cockpit. New Piper Aircraft has what you need for your fleet with Avidyne FlightMax Entegra Integrated Flight Deck, now available for the Warrior III, Archer III and Arrow.

Fly like pros from day one in a New Piper today.

To find out more contact New Piper Aircraft at:
866-648-1945 or visit newpiper.com



PiperTM
Freedom of flight

TM The New Piper Aircraft, Inc.



AVIDYNE

FlightMax *Entegra*

Good luck to all 2005 NIFA/Safecon Competitors.

One incredible journey.



When you're with American Eagle, you're working with some of the industry's best people, and with a company who understands and values top-flight talent. Our people have made us the world's largest regional carrier, offering more than 1,500 flights a day to more than 140 cities. With a combined fleet of 339 jet and turboprop aircraft, we're continually expanding our routes while providing more opportunities for our employees to spread their own wings.

**Stop by our booth
during SAFECON 2005
and learn more about a
rewarding career with
American Eagle**



AmericanEagleCareers.com

American Eagle is a mark of American Airlines, Inc.
American Eagle is American's regional airline affiliate.

An Equal Opportunity Employer.

Skyhawk. The best-selling aircraft since, well, ever.



There are many reasons why the Cessna Skyhawk is the most popular aircraft in history. For starters, this remarkable aircraft is fun and easy to fly. With solid, responsive handling. Forgiving flight characteristics. And a safety record unparalleled in the industry. Pilots also love the Skyhawk's proven reliability. And, of course, the way Cessna stands behind its product – with legendary service and support. Discover how the joy of flight can be, well, timeless. Call 1-800-622-7690 or visit skyhawk.cessna.com/99.

Garmin G1000™ glass cockpit available for 2005.

Cessna is proud to be a sponsor of the 2005 NIFA SAFECON Competition.

Sure Thing[®]

